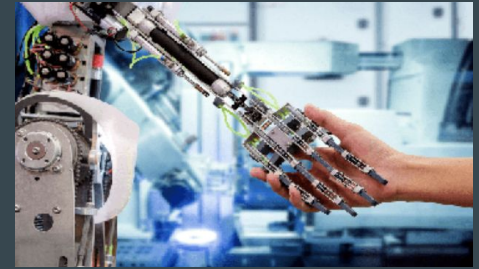


Land Conservation



About Me

- Started at the University of Utah in 2018
- Studying Biomedical Engineering
 - Spent a summer as an engineering intern
 - Realized engineering life is not for me
- Spent a summer as a mountain guide in Washington
- Headed to Wyoming with the forest service in May!



Mt St Helens

- Volcano erupted in 1980
- Only actively growing glacier in North America
- 1982 designated a monument
 - What do you think designating the land a monument would do?



What is conservation?



Conservation is important at many different levels.



Conservation at a governmental level.

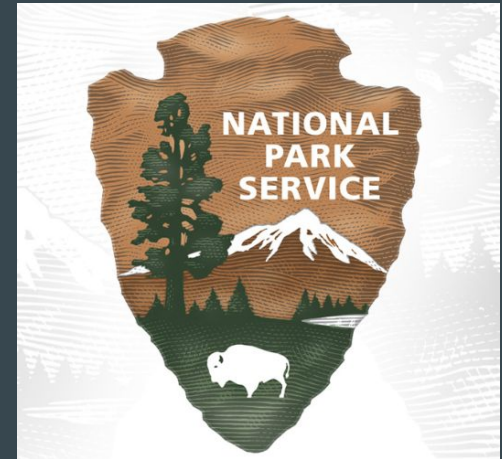
- Policy and legislation are important in protecting....
 - Water resources
 - Land
 - Setting federal and local conservation standards



Conservation at a governmental level.

What's the difference between

- national parks (National Park Service NPS)
- national forests (US Forest Service USFS)
- national monuments



Conservation at a corporation/company level.

- How much water is the company using?
- Is the company responsibly taking materials?
- How much waste is the company generating?

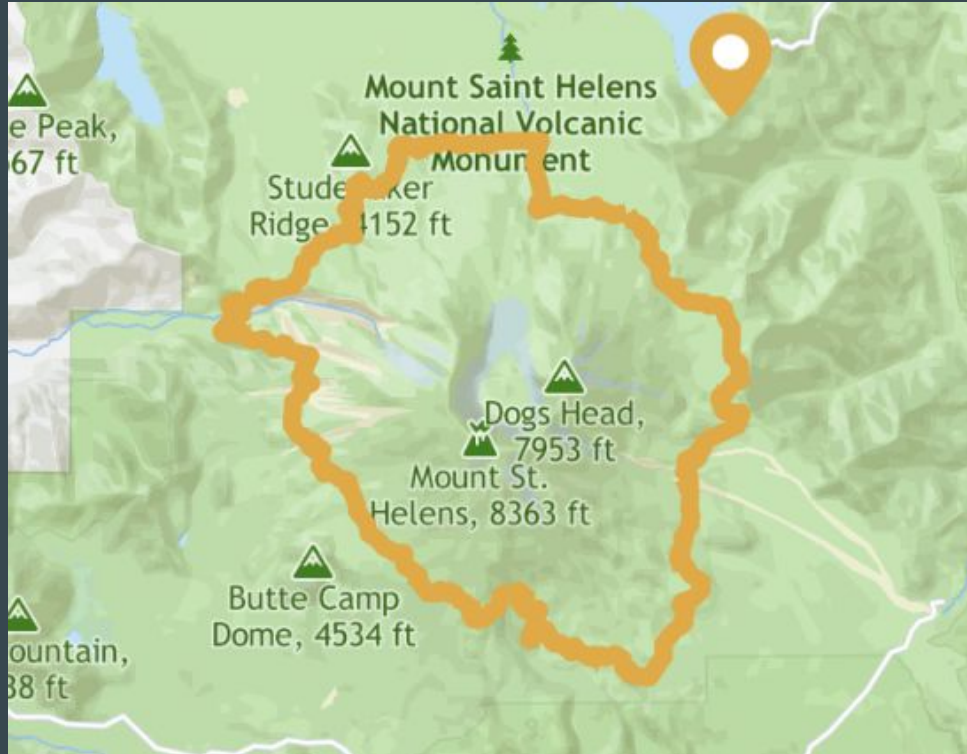


Conservation at an individual level.

- How are we directly impacting the lands we use?



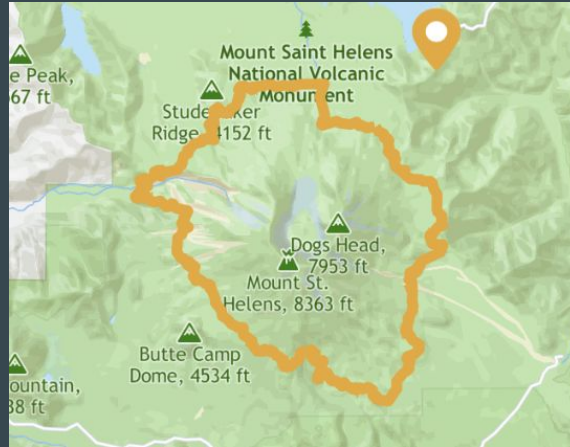
Your class is going on a 3 day backpacking trip around Mt St Helens.



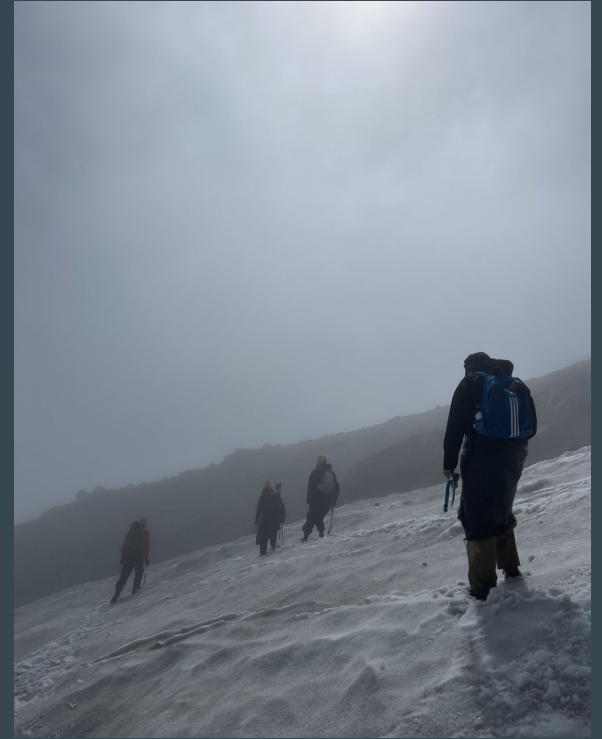
Your class is going on a 3 day backpacking trip around Mt St Helens.

Each of you is responsible for making sure the group follows one aspect of Leave No Trace.

Answer the questions on the piece of paper and be prepared to share.



Plan Ahead and Prepare



Travel and Camp on Durable Surfaces



Dispose of waste properly



Leave what you find



Minimize campfire impacts



Respect wildlife



Be considerate of others



Leave No Trace is.....

a way that people can
respectfully use the
outdoors.

Thank you for participating!

Any questions?
